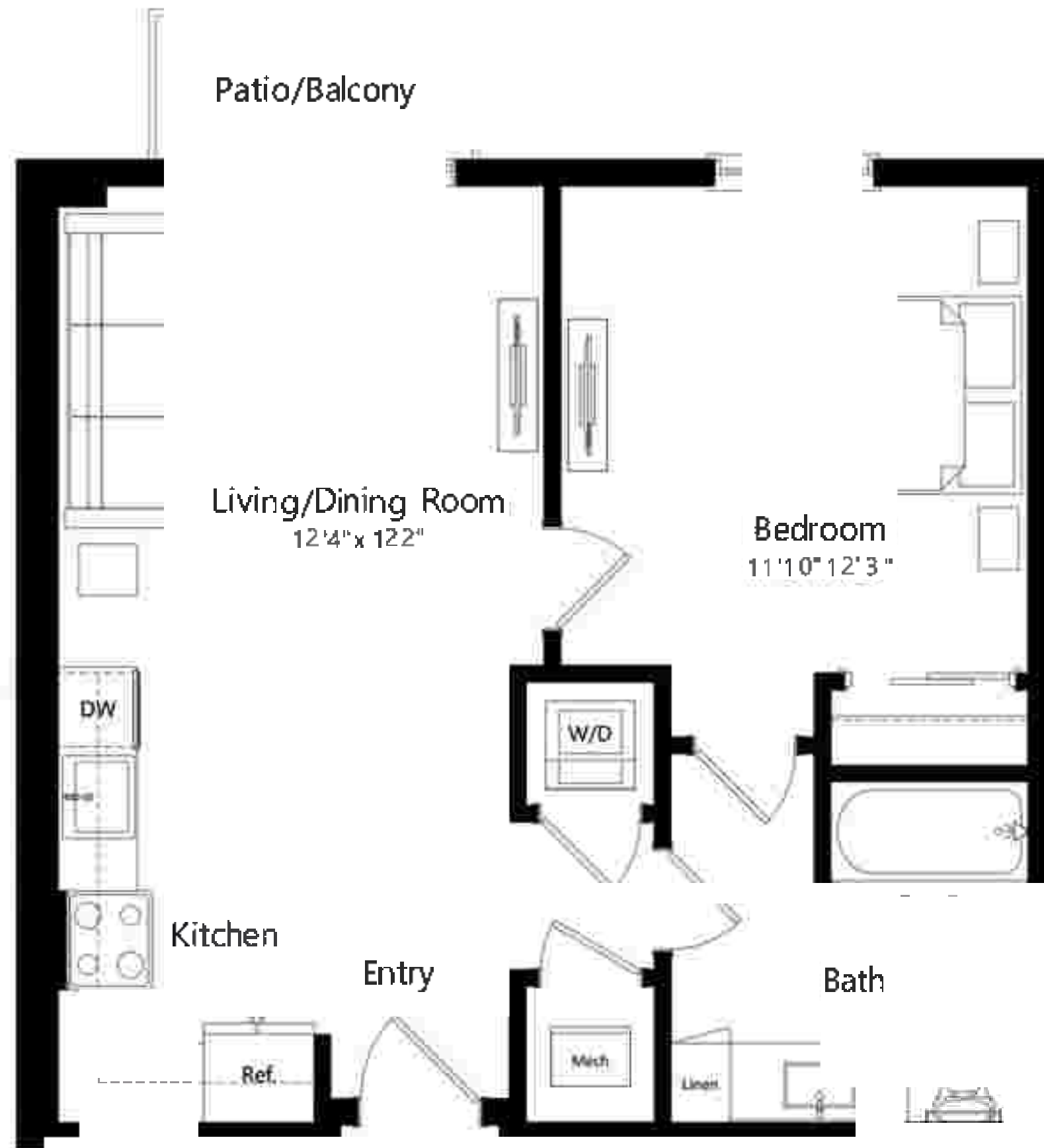


A1

BEDROOM BATH

14

RIVER DISTRICT
MOUNTAIN



635 | 194

SQ. FT. | M

The dimensions stated for this unit floor plan are approximate, because there are various recognized methods for calculating the square footage of a unit. The square footage stated here is calculated from the exterior boundaries of the exterior walls to the centerline of interior opening walls without deductions for cabinets, trays, or architectural features. This method typically results in quoted dimensions greater than the dimensions that would be determined by using other accepted methods. The definition of "Net" and the calculation method to be relied upon is set forth in the Developer's Prospectus. The illustrations and images are conceptual and may vary from concept to actual construction. The floor plan, unit layout, locations of windows, doors, closets, plumbing fixtures, mechanical equipment, appliances, structural elements, architectural design elements, and the walls, configurations, and entries to rooms may change (with) based on that approval (and) permitting, and construction. The furniture plan and the uses of space illustrated are suggested uses only and not intended to guarantee any specific use of space. Furnishings, design features, fixtures, and other illustrated are conceptual and may vary upon completion. The Developer, River Bath Property Owner LLC, is a licensee of ALTA Development LLC who is not the Developer. © 2023 with all rights reserved River Bath Property Owner LLC.

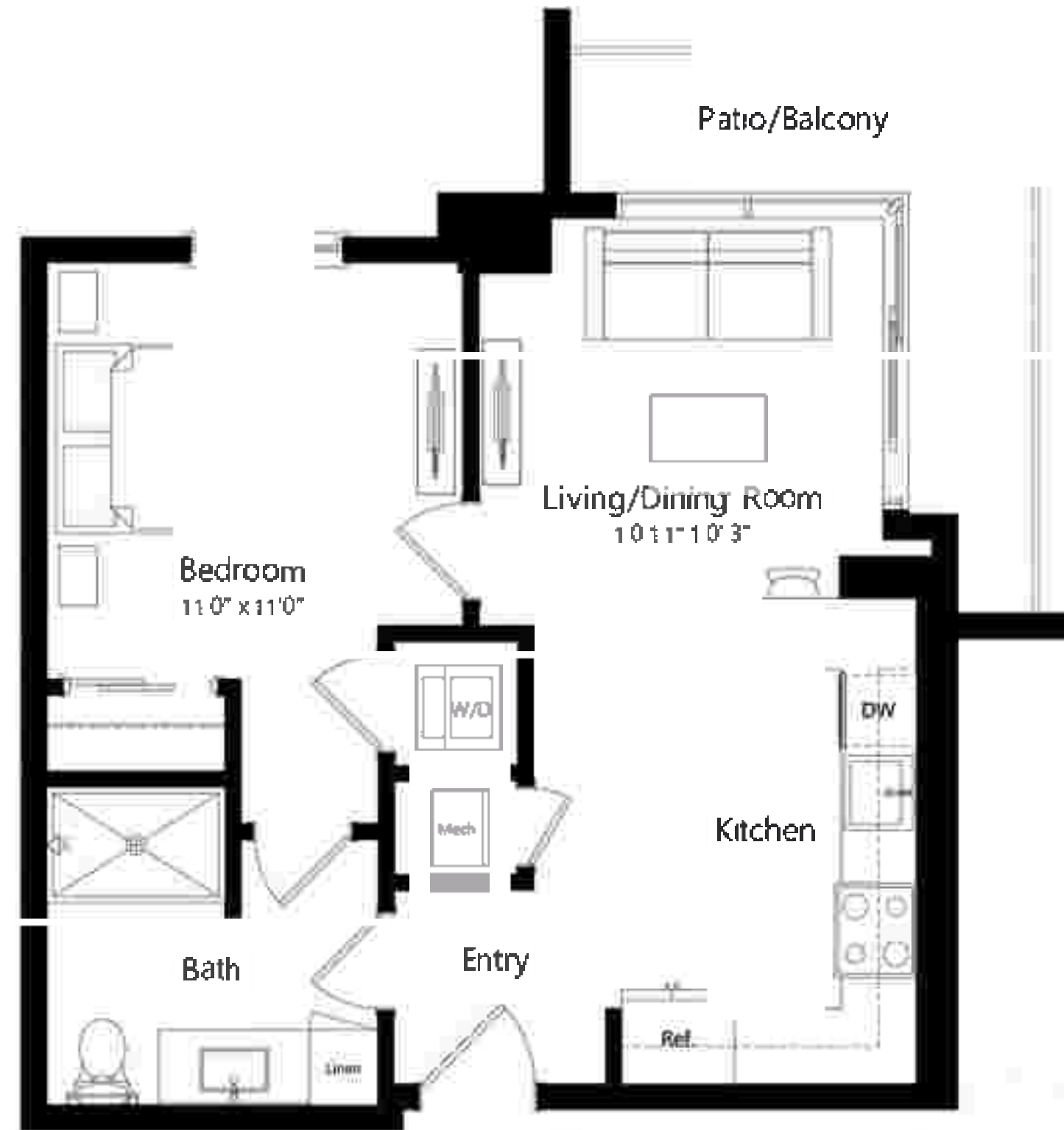


A2

BEDROOM BATH

14

RIVER DISTRICT
MIAMI



575 | 175

SQ. FT. | M

The dimensions stated for this unit floor plan are approximate because there are various recognized methods for calculating the square footage of a unit. The square footage stated here is calculated from the exterior boundaries of the exterior walls to the centerline of interior opening walls without deductions for cabinets, closets, or architectural features. This method typically results in quoted dimensions greater than the dimensions that would be determined by using other accepted methods. The definition of "Net" and the calculation method to be relied upon is set forth in the Developer's Prospectus. The illustrations and ranges are conceptual and may vary from concept to actual construction. The floor plan, unit layout, locations of windows, doors, closets, plumbing fixtures, electrical equipment, appliances, structural elements, architectural design elements, and the walls, configurations, and entries to rooms may change with approved plans, permitting, and construction. The furniture plan and the uses of space illustrated are suggested uses only and not intended to guarantee the availability of space. Furnishings, design features, fixtures, and other illustrated are conceptual and may vary upon completion. The Developer, River Bath Property Owner LLC, is a licensee of A/L/T Development LLC who is not the Developer. © 2023 with all rights reserved River Bath Property Owner LLC.



B1

BEDROOM BATH

14

RIVER DISTRICT

MINI



640 | 195

SQ FT | M

The dimensions stated for this unit floor plan are approximate because there are various recognized methods for calculating the square footage of a unit. The above footage stated here is calculated from the exterior boundaries of the exterior walls to the centerline of interior hallway walls without deductions for alcoves, curves, or architectural features. This method typically results in a square footage greater than the dimensions that would be determined by any other accepted method. The definition of "GFA" and the calculation method to be relied upon is set forth in the Developer's Prospectus. The illustrations and images are conceptual and may vary from concept to actual construction. The floor plan will specify location of windows, doors, closets, plumbing fixtures, mechanical equipment, appliance, structural elements, architectural design elements, and tile uses, configurations, and details to rooms they change with based on final approved plans, permitting, and construction. The furniture (like and the uses of space illustrated) are suggested ideas only and not intended to guarantee any specific use of space. Furnishings, design features, fixtures, and door hardware are unillustrated and may vary upon completion. The Developer, River North Property Owner LLC, is a licensee of ALTA Development LLC who is not the Developer. © 2023 with all rights reserved River North Property Owner LLC



B2

1 BEDROOM 1 BATH

14

RIVER DISTRICT

MIAMI



640 | 195

SQ FT | M

The dimensions stated for this unit floor plan are approximate, because there are various recognized methods for calculating the square footage of a unit. The square footage stated here is calculated from the exterior boundaries of the exterior walls to the centerline of interior opening walls without deductions for cabinets, trays, or architectural features. This method typically results in quoted dimensions greater than the dimensions that would be determined by using other accepted methods. The definition of "Net" and the calculation method to be relied upon is set forth in the Developer's Prospectus. The illustrations and images are conceptual and may vary from concept to actual construction. The floor plan, unit layout, locations of windows, doors, closets, plumbing fixtures, electrical equipment, appliances, structural elements, architectural design elements, and the walls, configurations, and entries to rooms may change with approved plans, permitting, and construction. The furniture plan and the uses of space illustrated are suggested uses only and not intended to guarantee the specific use of space. Furnishings, design features, fixtures, and other illustrated are conceptual and may vary upon completion. The Developer, River Bath Property Owner LLC, is a licensee of ALTA Development LLC who is not the Developer. © 2023 with all rights reserved River Bath Property Owner LLC.



B3

BEDROOM BATH

14

RIVER DISTRICT

MINI



640 | 195

SQ FT | M

The dimensions stated for this unit floor plan are approximate, because there are various recognized methods for measuring the square footage of a unit. The square footage stated here is calculated from the exterior boundaries of the exterior walls to the centerline of interior dividing walls without deductions for cabinets, trays, or architectural features. This method typically results in quoted dimensions greater than the dimensions that would be determined by using other accepted methods. The definition of "Net" and the calculation method to be relied upon is set forth in the Developer's Prospectus. The illustrations and images are conceptual and may vary from concept to actual construction. The floor plan, unit layout, locations of windows, doors, closets, plumbing fixtures, electrical equipment, appliances, structural elements, architectural design elements, and the walls, configurations, and entries to rooms may change with or without notice based on final approvals, plans, permitting, and construction. The furniture plan and the uses of space illustrated are suggested uses only and not intended to guarantee any specific use of space. Furnishings, design features, fixtures, and other illustrations are conceptual and may vary upon completion. The Developer, River North Property Owner LLC, is a licensee of ALTA Development LLC who is not the Developer. © 2023 with all rights reserved River North Property Owner LLC.



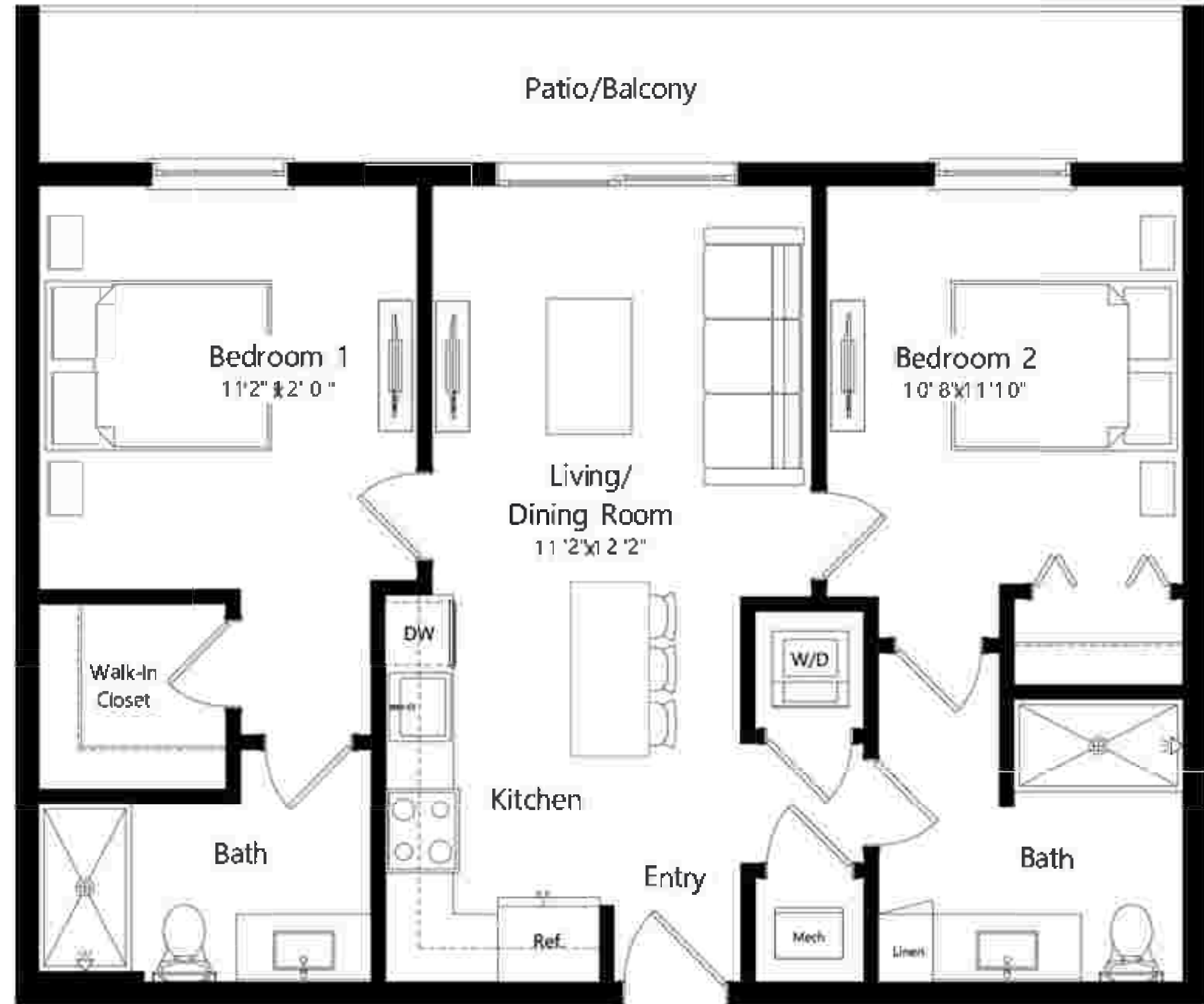
C1

2 BEDROOM 2 BATH

14

RIVER DISTRICT

MIAMI



865 | 264

SQ FT | M

The dimensions stated for this unit floor plan are approximate because there are various recognized methods for calculating the square footage of a unit. The square footage stated here is calculated from the exterior boundaries of the interior walls to the centerline of interior opening walls without deductions for columns, curves, or architectural features. This method typically results in a quoted dimension greater than the dimensions that would be determined by using other accepted methods. The definition of "GFA" and the calculation method to be relied upon is set forth in the Developer's Prospectus. The illustrations and images are conceptual and may vary from concept to actual construction. The floor plan, unit layout, locations of windows, doors, stairs, plumbing fixtures, mechanical equipment, appliances, structural openings, architectural design elements and fixtures, configurations, and entries to rooms may change without notice upon final approved plans, permitting, and construction. The furniture plan and the uses of space (stated) are suggested uses only and not intended to substitute any specific use of space. Furnishings, design features, fixtures, and other illustrations are conceptual and may vary upon completion. The Developer, River North Property Owner LLC, is a licensee of ALTA Developers LLC and is not the Developer. © 2023 with all rights reserved River North Property Owner LLC.

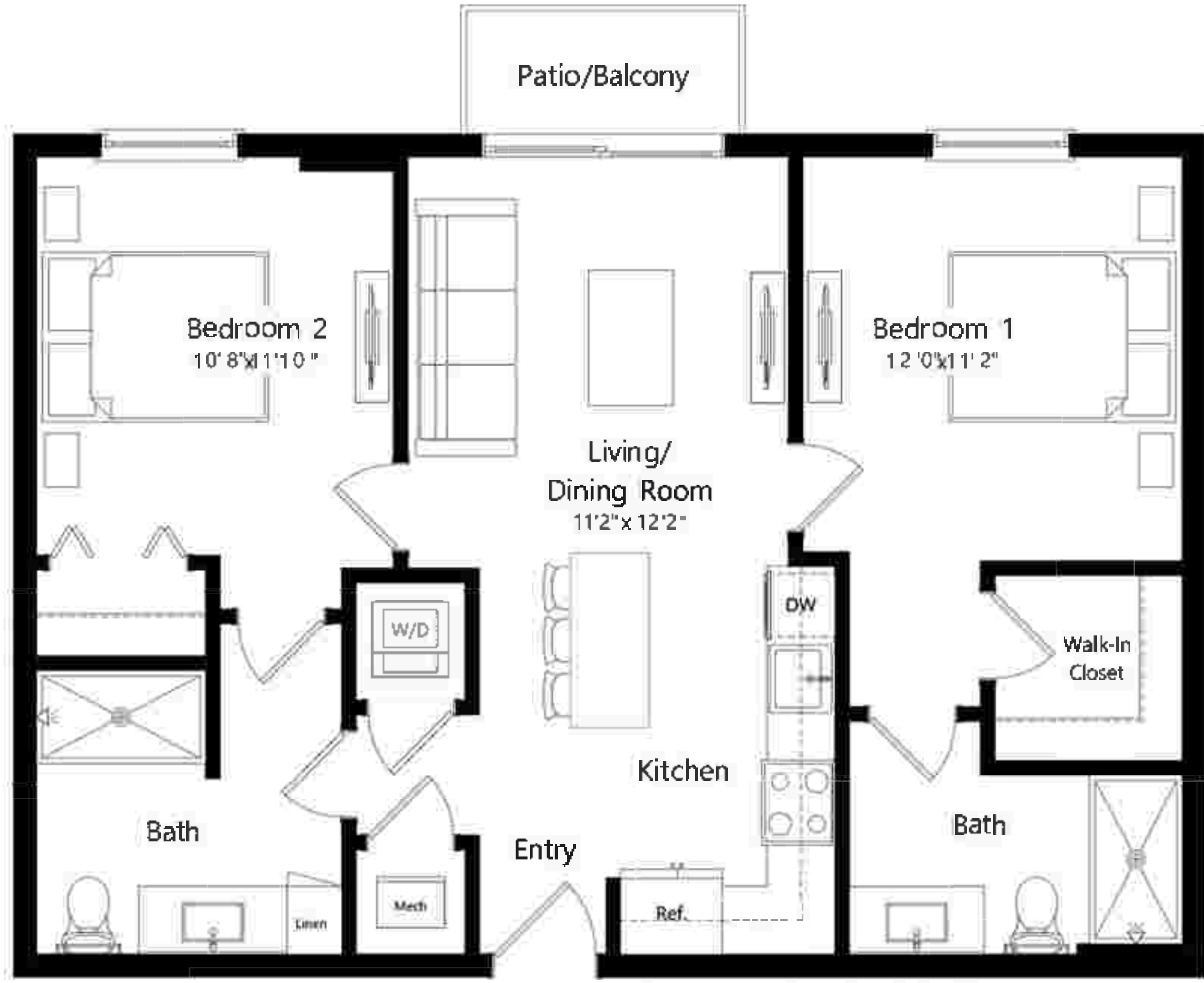


C1A

2 BEDROOM 2 BATH

14

RIVER DISTRICT
MIAMI



875 | 267

SQ. FT. | M

The dimensions stated for this unit floor plan are approximate, because there are various recognized methods for calculating the square footage of a unit. The square footage stated here is calculated from the exterior boundaries of the exterior walls to the centerline of interior dividing walls without deductions for cabinets, trays, or architectural features. This method typically results in quoted dimensions greater than the dimensions that would be determined by using other accepted methods. The definition of "Net" and the calculation method to be relied upon is set forth in the Developer's Prospectus. The illustrations and ranges are conceptual and may vary from concept to actual construction. The floor plan, unit layout, locations of windows, doors, closets, plumbing fixtures, electrical equipment, appliances, structural elements, architectural design elements, and the work, configurations, and entries to rooms may change with the approval plans, permitting, and construction. The furniture plan and the uses of space illustrated are suggested uses only and not intended to guarantee any specific use of space. Furnishings, design features, fixtures, and other illustrated are conceptual and may vary upon completion. The Developer, River South Property Owner LLC, is a licensee of A/L/R Development LLC who is not the Developer. © 2023 with all rights reserved River South Property Owner LLC.



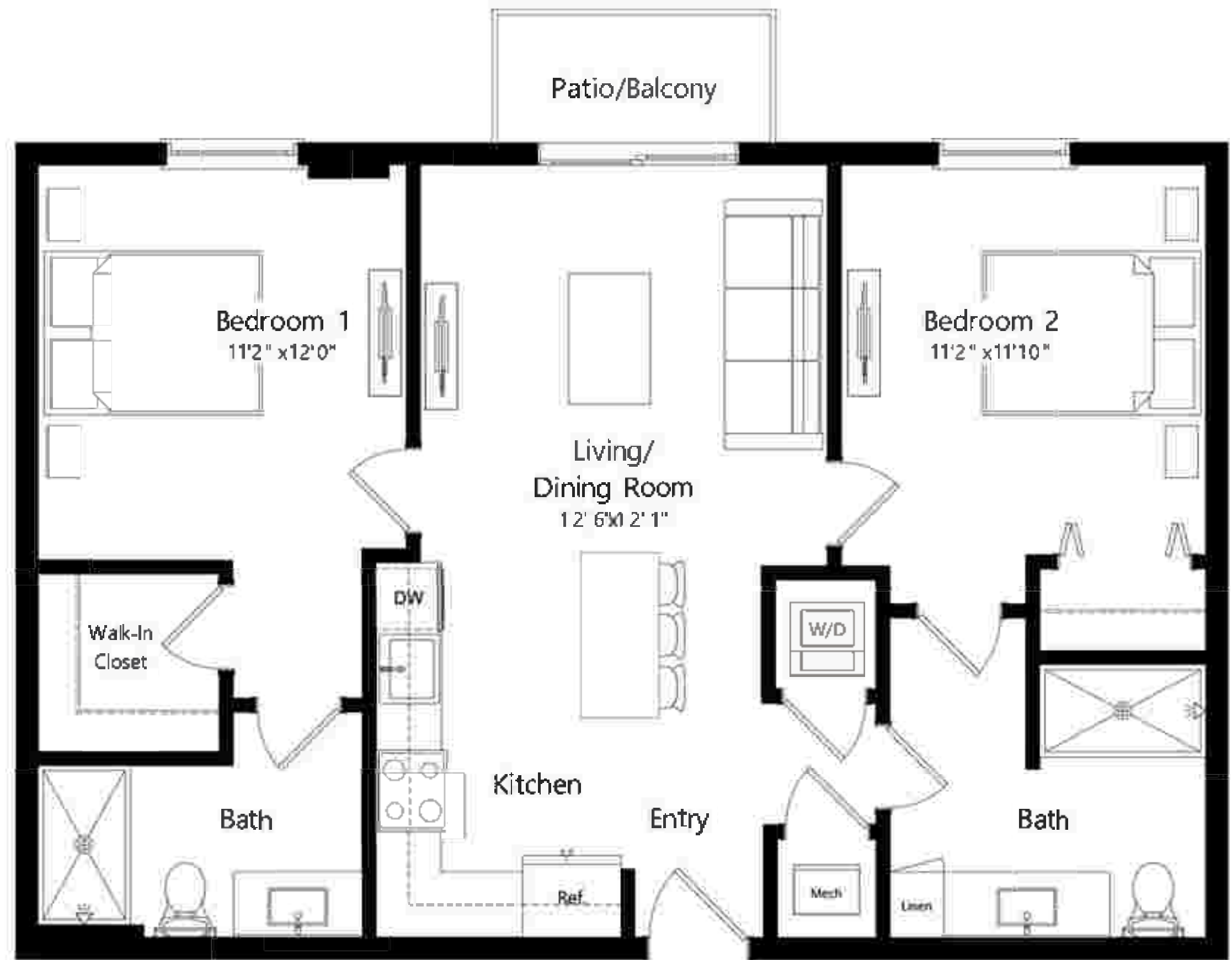
C1B

2 BEDROOM 2 BATH

14

RIVER DISTRICT

MIAMI



880 | 268

SQ. FT. | M

The dimensions stated for this unit floor plan are approximate, because there are various recognized methods for measuring the square footage of a unit. The square footage stated here is calculated from the exterior boundaries of the exterior walls to the centerline of interior opening walls without deductions for cabinets, trays, or architectural features. This method typically results in quoted dimensions greater than the dimensions that would be determined by using other accepted methods. The definition of "Net" and the calculation method to be relied upon is set forth in the Developer's Prospectus. The illustrations and images are conceptual and may vary from concept to actual construction. The floor plan, unit layout, locations of windows, doors, closets, plumbing fixtures, electrical equipment, appliances, structural elements, architectural design elements, and the walls, configurations, and entries to rooms may change with approved plans, permitting, and construction. The furniture plan and the uses of space illustrated are suggested uses only and not intended to guarantee the availability of space. Furnishings, design features, fixtures, and other illustrated are conceptual and may vary upon completion. The Developer, River Bath Property Owner LLC, is a licensee of ALTA Development LLC who is not the Developer. © 2023 with all rights reserved River Bath Property Owner LLC.

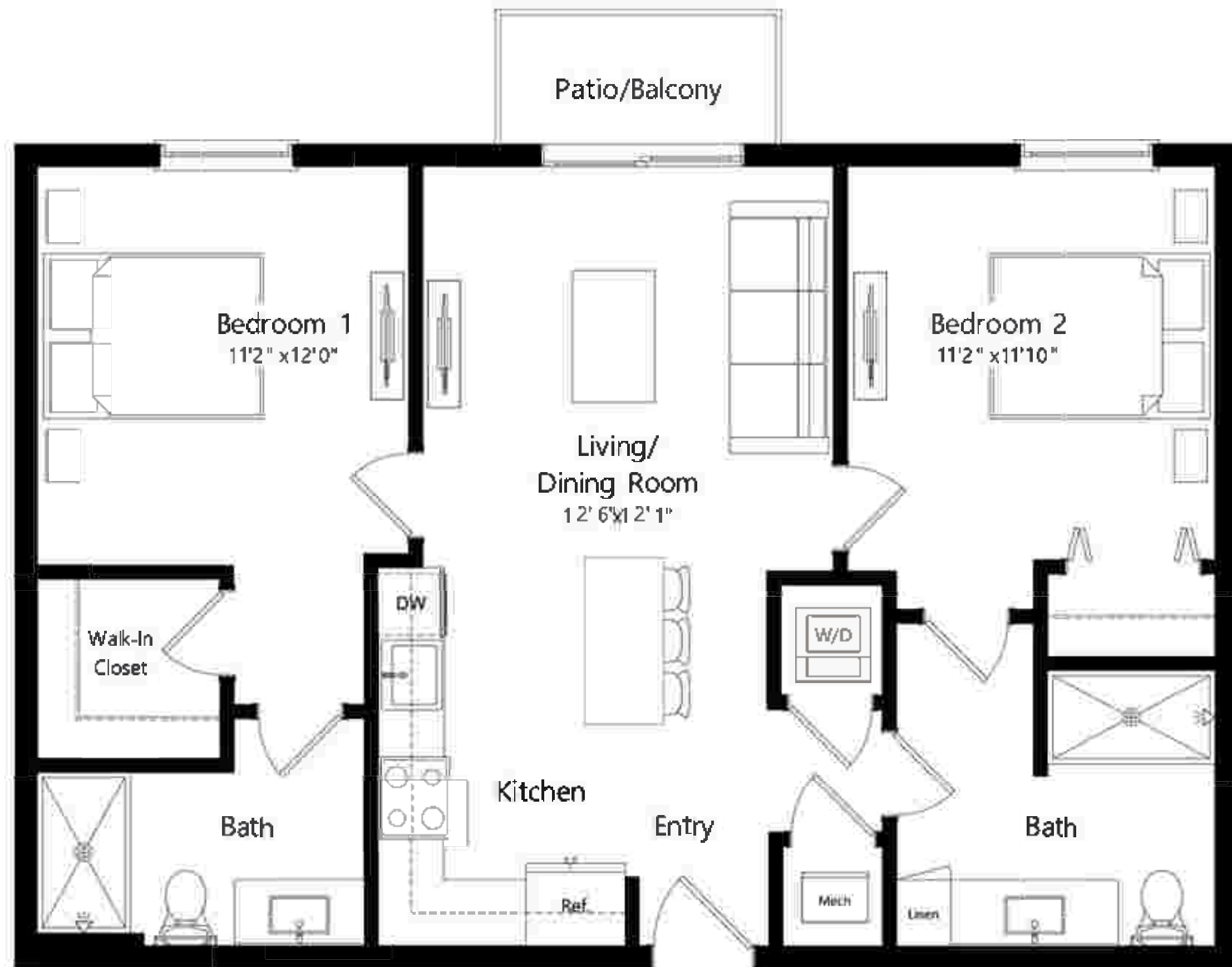


C2

2 BEDROOM 2 BATH

14

RIVER DISTRICT
MIAMI



910 | 277

SQ FT | M

The dimensions stated for this unit floor plan are approximate, because there are various recognized methods for measuring the square footage of a unit. The square footage stated here is calculated from the exterior boundaries of the exterior walls to the centerline of interior dividing walls without deductions for cabinets, trays, or architectural features. This method typically results in quoted dimensions greater than the dimensions that would be determined by using other accepted methods. The definition of "Net" and the calculation method to be used upon is set forth in the Developer's Prospectus. The illustrations and images are conceptual and may vary from concept to actual construction. The floor plan, unit layout, locations of windows, doors, closets, plumbing fixtures, electrical equipment, appliances, structural elements, architectural design elements, and the work, configurations, and entries to rooms may change with approved plans, permitting, and construction. The furniture plan and the uses of space illustrated are suggested uses only and not intended to guarantee the availability of space. Furnishings, design features, fixtures, and other illustrated are conceptual and may vary upon completion. The Developer, River South Property Owner LLC, is a licensee of ALTA Development LLC who is not the Developer. © 2023 with all rights reserved River South Property Owner LLC.

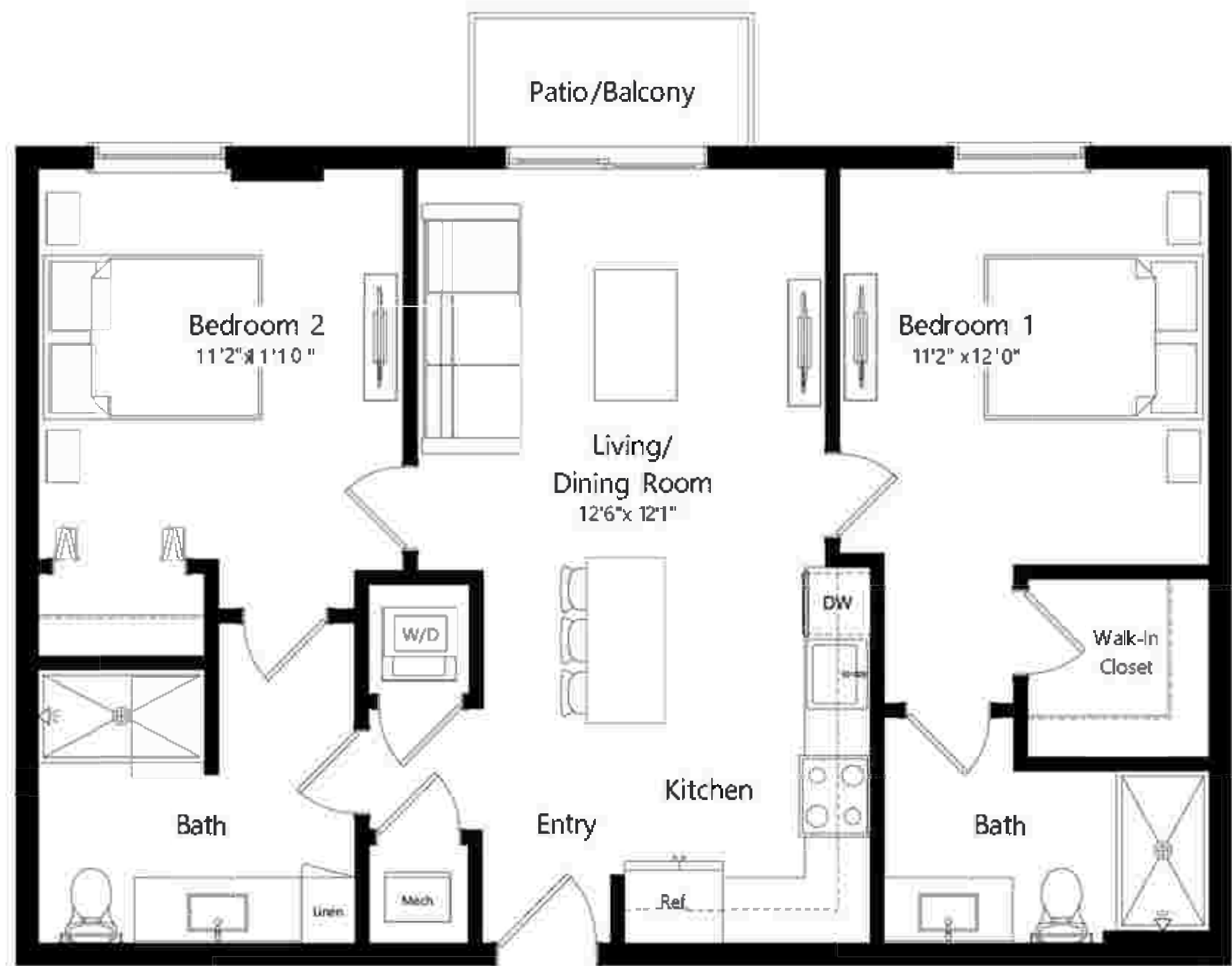


C2A

2 BEDROOM 2 BATH

14

RIVER DISTRICT
MIAMI



915 | 279

SQ FT | M

The dimensions stated for this unit floor plan are approximate, because there are various recognized methods for measuring the square footage of a unit. The square footage stated here is calculated from the exterior boundaries of the exterior walls to the centerline of interior opening walls without deductions for cabinets, trays, or architectural features. This method typically results in quoted dimensions greater than the dimensions that would be determined by using other accepted methods. The definition of "Net" and the calculation method to be relied upon is set forth in the Developer's Prospectus. The illustrations and ranges are conceptual and may vary from concept to actual construction. The floor plans, unit layout, locations of windows, doors, closets, plumbing fixtures, electrical equipment, appliances, structural elements, architectural design elements, and the walls, configurations, and entries to rooms may change with final approval plans, permitting, and construction. The furniture plan and the uses of space illustrated are suggested uses only and not intended to guarantee any specific use of space. Furnishings, design features, fixtures, and other illustrations are conceptual and may vary upon completion. The Developer, River Bath Property Owner LLC, is a licensee of A/L/T Development LLC who is not the Developer. © 2023 with all rights reserved River Bath Property Owner LLC.

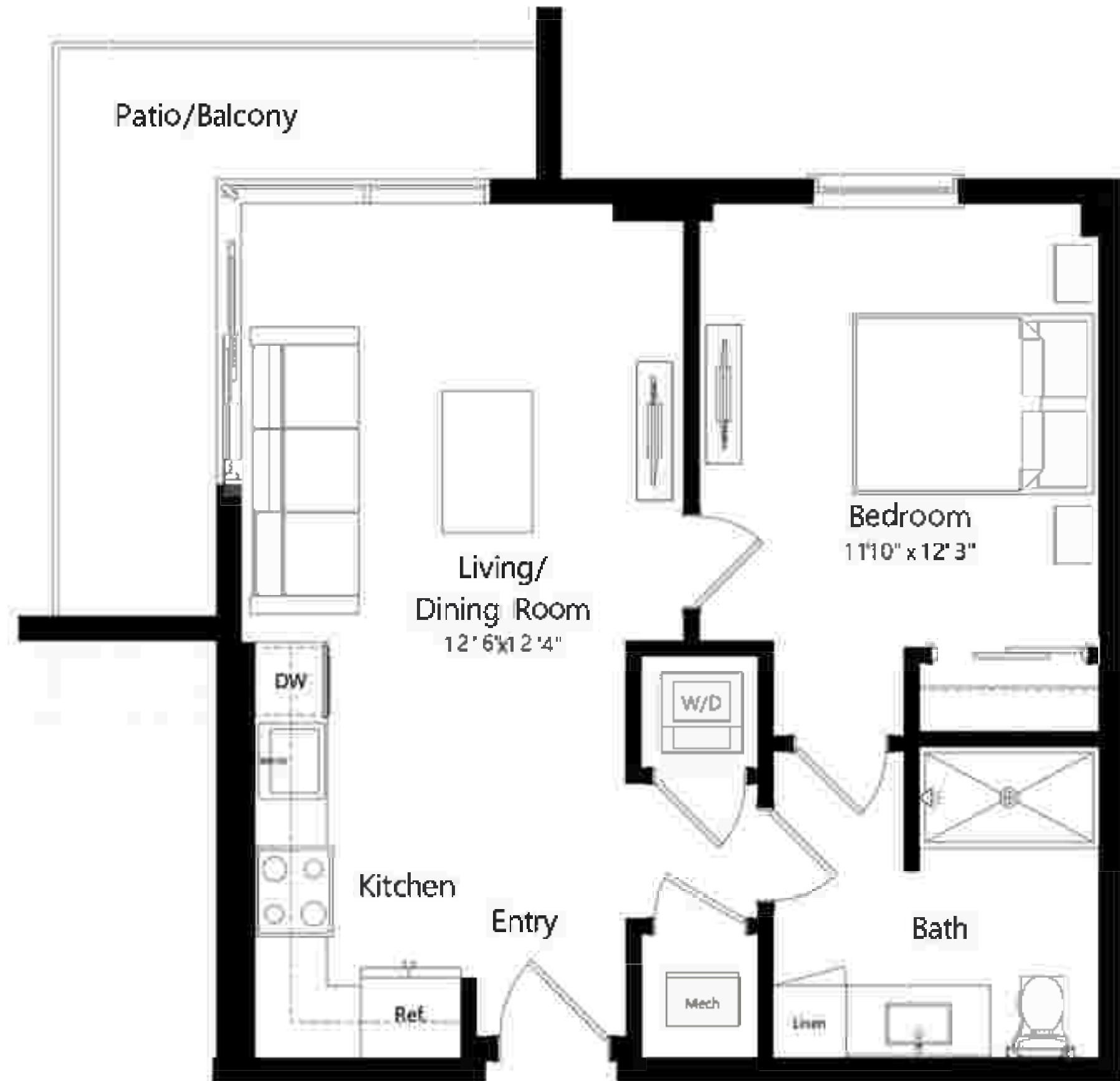


D1

BEDROOM BATH

14

RIVER DISTRICT
MIAMI



600 | 183

SQ. FT. | M

The dimensions stated for this unit floor plan are approximate, because there are various recognized methods for measuring the square footage of a unit. The square footage stated here is calculated from the exterior boundaries of the exterior walls to the centerline of interior demising walls without deductions for cabinets, trays, or architectural features. This method typically results in quoted dimensions greater than the dimensions that would be determined by using other accepted methods. The definition of "Net" and the calculation method to be relied upon is set forth in the Developer's Prospectus. The illustrations and images are conceptual and may vary from concept to actual construction. The floor plan, unit layout, locations of windows, doors, closets, plumbing fixtures, electrical equipment, appliances, structural elements, architectural design elements, and the work, configurations, and fixtures to rooms may change with actual construction plans, permitting, and construction. The furniture plan and the uses of space illustrated are suggested uses only and not intended to guarantee any specific use of space. Furnishings, design features, fixtures, and other illustrated are conceptual and may vary upon completion. The Developer, River South Property Owner LLC, is a licensee of A/L/T Development LLC who is not the Developer. © 2023 with all rights reserved River South Property Owner LLC.

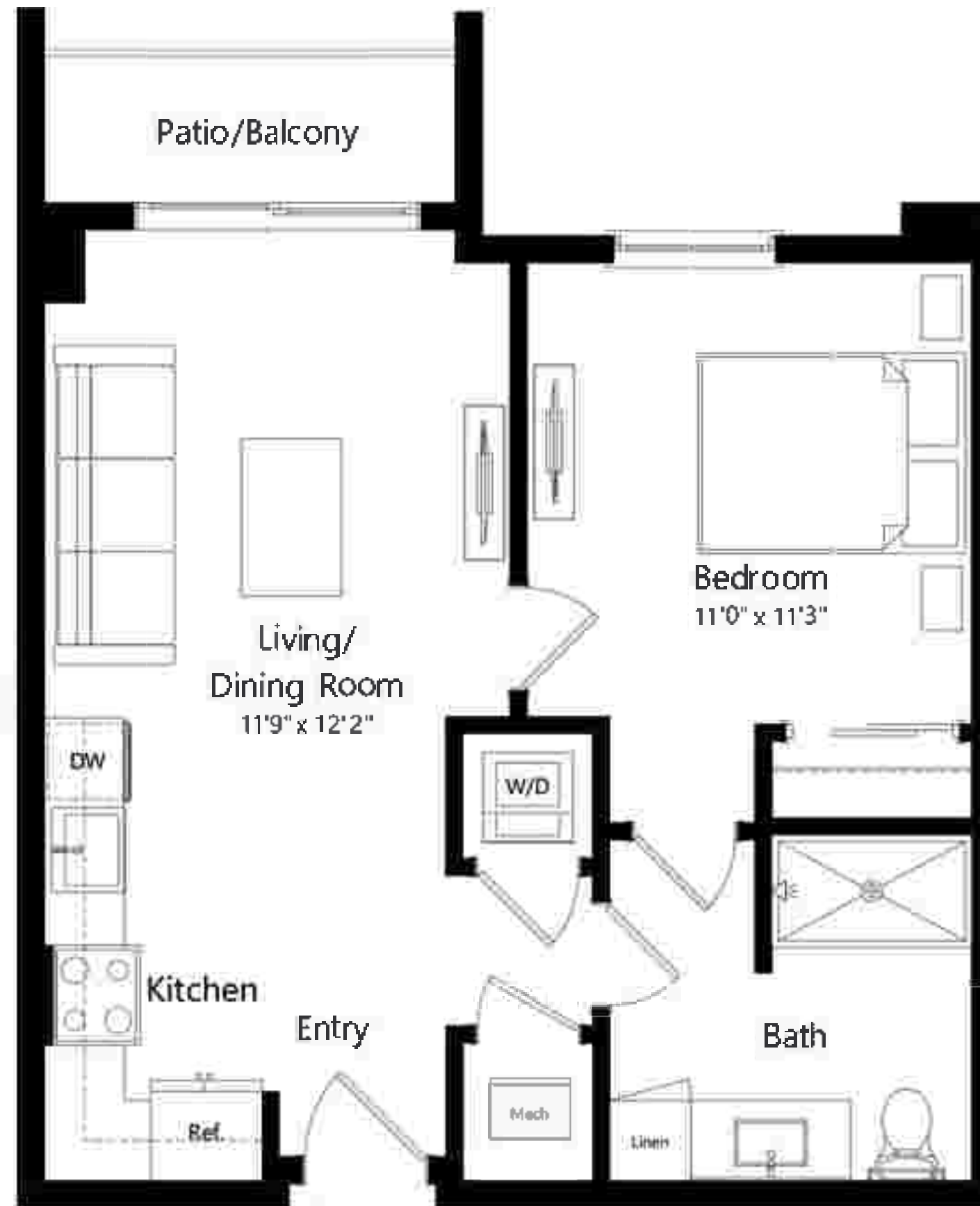


D2

BEDROOM BATH

14

RIVER DISTRICT
MIAMI



560 | 171

SQ FT | M

w: RiverDistrict14.com

e: Sales@RiverDistrict14.com

t: 305-482-1542

The dimensions stated for this unit floor plan are approximate, because there are various recognized methods for calculating the square footage of a unit. The square footage stated here is calculated from the exterior boundaries of the exterior walls to the centerline of interior opening walls without deductions for columns, trusses, or architectural features. This method typically results in quoted dimensions greater than the dimensions that would be determined by using other accepted methods. The definition of "Net" and the calculation method to be used upon is set forth in the Developer's Prospectus. The illustrations and images are conceptual and may vary from concept to actual construction. The floor plan, unit layout, locations of windows, doors, closets, plumbing fixtures, electrical equipment, appliances, structural elements, architectural design elements, and the walls, configurations, and entries to rooms may change with actual construction plans, permitting, and construction. The furniture plan and the uses of space illustrated are suggested uses only and not intended to guarantee the availability of space. Furnishings, design features, fixtures, and other illustrations are conceptual and may vary upon completion. The Developer, River South Property Owner LLC, is a licensee of ALTA Development LLC who is not the Developer. © 2023 with all rights reserved River South Property Owner LLC.



D2A

BEDROOM BATH

14

RIVER DISTRICT
MIAMI



570 | 174

SQ FT | M

w: RiverDistrict14.com

e: Sales@RiverDistrict14.com

t: 305-482-1542

The dimensions stated for this unit floor plan are approximate, because there are various recognized methods for calculating the square footage of a unit. The square footage stated here is calculated from the exterior boundaries of the exterior walls to the centerline of interior opening walls without deductions for cabinets, trays, or architectural features. This method typically results in quoted dimensions greater than the dimensions that would be determined by using other accepted methods. The definition of "Net" and the calculation method to be relied upon is set forth in the Developer's Prospectus. The illustrations and images are conceptual and may vary from concept to actual construction. The floor plan, unit layout, locations of windows, doors, closets, plumbing fixtures, electrical equipment, appliances, structural elements, architectural design elements, and the walls, configurations, and entries to rooms may change with final approval plans, permitting, and construction. The furniture plan and the uses of space illustrated are suggested uses only and not intended to guarantee the availability of space. Furnishings, design features, fixtures, and other illustrated are conceptual and may vary upon completion. The Developer, River South Property Owner LLC, is a licensee of ALTA Development LLC who is not the Developer. © 2023 with all rights reserved River South Property Owner LLC.

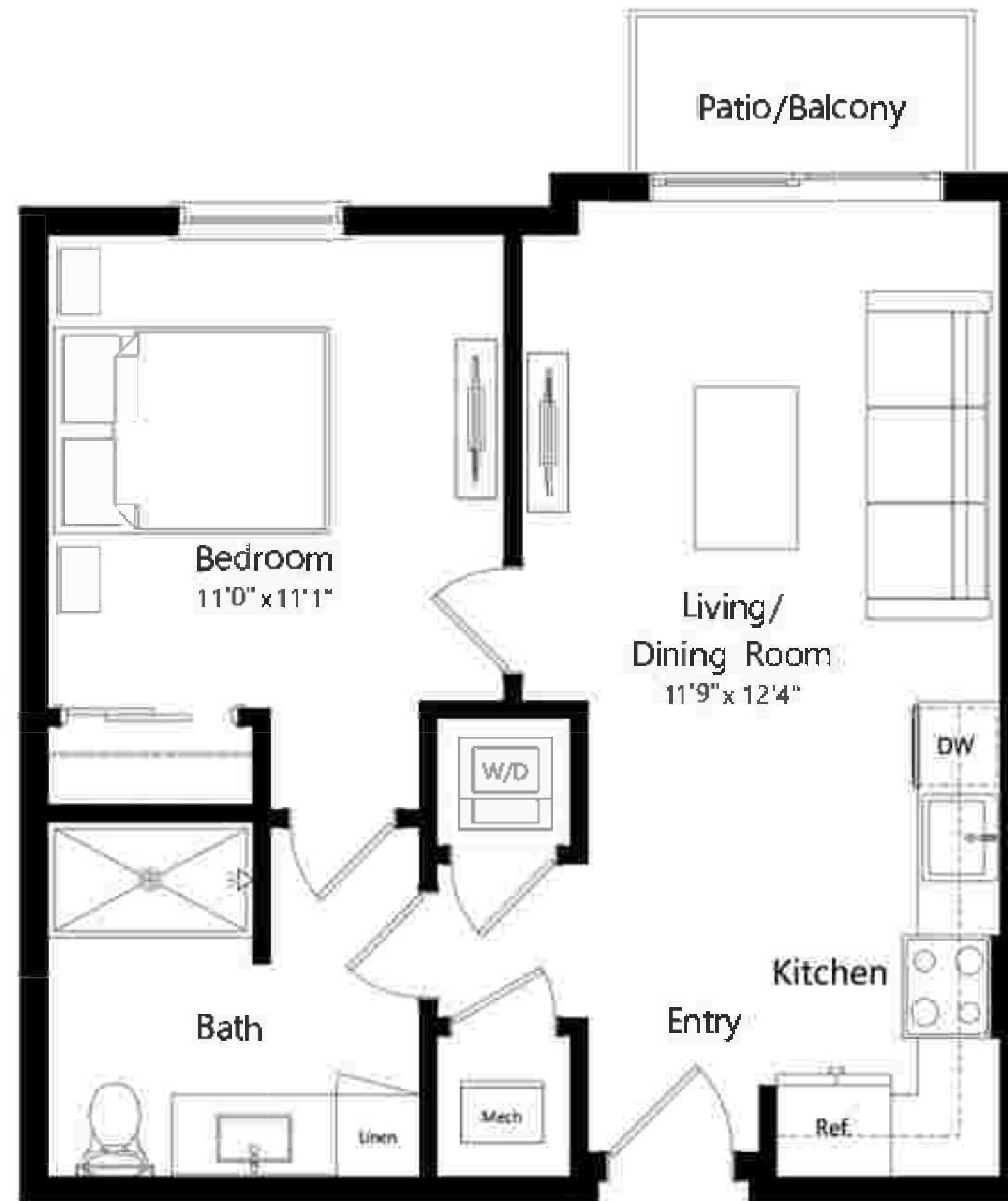


D3

1 BEDROOM 1 BATH

14

RIVER DISTRICT
MIAMI



580 | 177

SQ FT | M

w: RiverDistrict14.com

e: Sales@RiverDistrict14.com

t: 305-482-1542

The dimensions stated for this unit floor plan are approximate because there are various recognized methods for calculating the square footage of a unit. The square footage stated here is calculated from the exterior boundaries of the interior walls to the centerline of interior opening walls without deductions for columns, curves, or architectural features. This method typically results in quoted dimensions greater than the dimensions that would be determined by using other accepted methods. The definition of "GFA" and the calculation method to be relied upon is set forth in the Developer's Prospectus. The illustrations and images are conceptual and may vary from concept to actual construction. The floor plan, site layout, locations of windows, doors, stairs, plumbing fixtures, mechanical equipment, appliances, structural elements, architectural design elements, and fixtures to which you may change will depend on final approved plans, permitting, and construction. The furniture plan and the uses of space illustrated are suggested uses only and not intended to guarantee any specific use of space. Furnishings, design features, fixtures, and other illustrations are conceptual and may vary upon completion. The Developer, River North Property Owner LLC, is a licensee of ALTA Development LLC and is not the Developer. © 2023 with all rights reserved River North Property Owner LLC.



E1

STUDIO ↑ BATH

14

RIVER DISTRICT
MIAMI



520 | 158

SQ FT | M

w: RiverDistrict14.com

e: Sales@RiverDistrict14.com

t: 305-482-1542

The dimensions stated for this unit floor plan are approximate, because there are various recognized methods for calculating the square footage of a unit. The square footage stated here is calculated from the exterior boundaries of the exterior walls to the centerline of interior demising walls without deductions for cabinets, closets, or architectural features. This method typically results in quoted dimensions greater than the dimensions that would be determined by using other accepted methods. The definition of "Net" and the calculation method to be used upon is set forth in the Developer's Prospectus. The illustrations and images are conceptual and may vary from concept to actual construction. The floor plan, unit layout, locations of windows, doors, closets, plumbing fixtures, electrical equipment, appliances, structural elements, architectural design elements, and the walls, configurations, and entries to rooms may change with approved plans, permitting, and construction. The furniture plan and the uses of space illustrated are suggested uses only and not intended to guarantee any specific use of space. Furnishings, design features, fixtures, and other illustrated are conceptual and may vary upon completion. The Developer, River Bath Property Owner LLC, is a licensee of ALTA Development LLC who is not the Developer. © 2023 with all rights reserved River Bath Property Owner LLC.

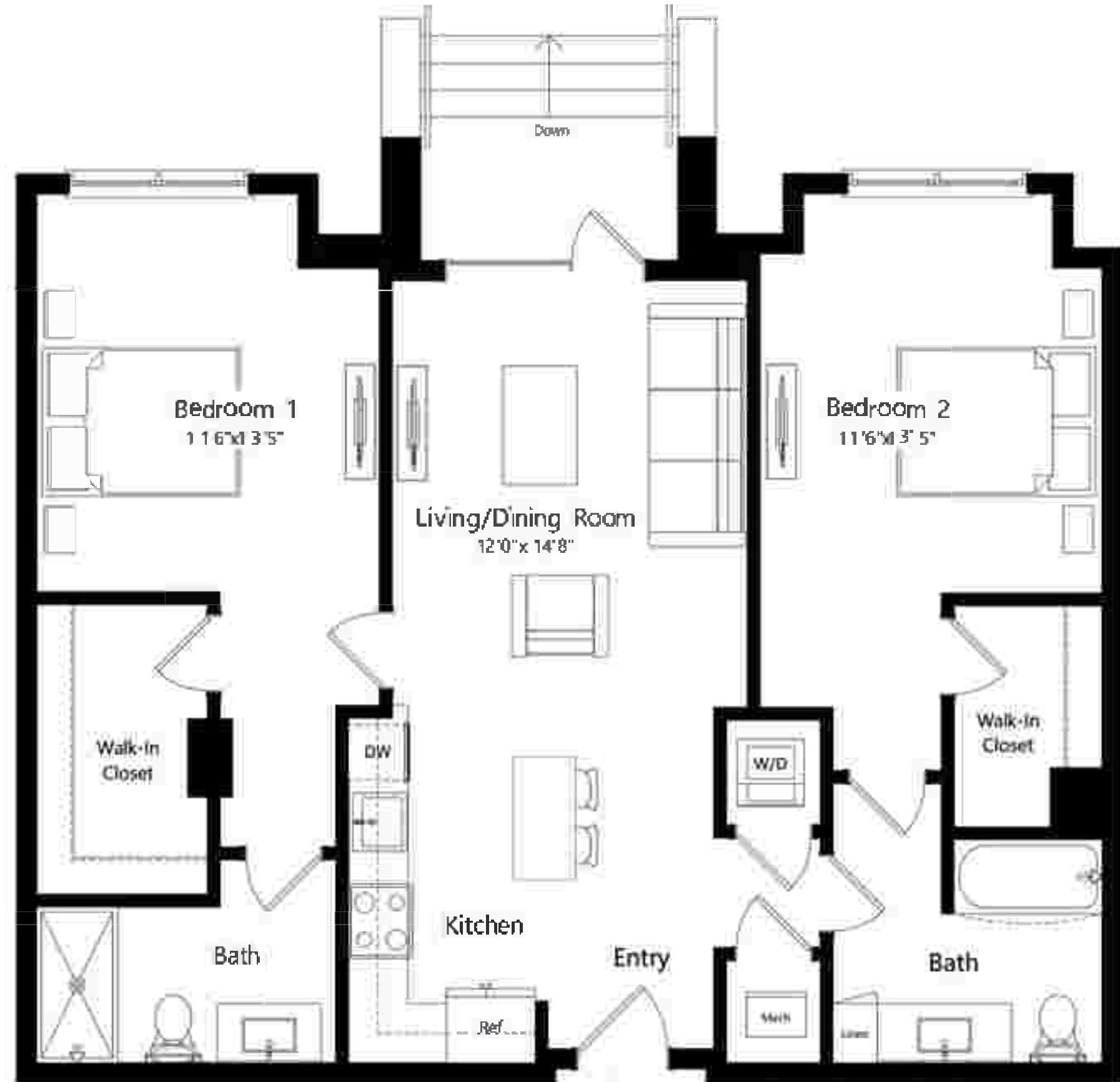


F1

2 BEDROOM 2 BATH

14

RIVER DISTRICT
MIAMI



1080 | 329

SQ. FT. | M

w: RiverDistrict14.com

e: Sales@RiverDistrict14.com

t: 305-482-1542

The dimensions stated for this unit are approximate because there are various recognized methods for calculating the square footage of a unit. The square footage stated here is calculated from the exterior boundaries of the exterior walls to the centerline of interior dividing walls without deductions for cabinets, trays, or architectural features. This method typically results in quoted dimensions greater than the dimensions that would be determined by using other accepted methods. The definition of "Net" and the calculation method to be relied upon is set forth in the Developer's Prospectus. The illustrations and images are conceptual and may vary from concept to actual construction. The floor plan, unit layout, locations of windows, doors, closets, plumbing fixtures, mechanical equipment, appliances, structural elements, architectural design elements, and the walls, configurations, and entries to rooms may change with approved plans, permitting, and construction. The furniture plan and the uses of space illustrated are suggested uses only and not intended to guarantee the availability of space. Furnishings, design features, fixtures, and other illustrated are conceptual and may vary upon completion. The Developer, River South Property Owner LLC, is a licensee of ALTA Development LLC who is not the Developer. © 2023 with all rights reserved River South Property Owner LLC.



F2

1 BEDROOM 1 BATH

14

RIVER DISTRICT
MIAMI



740 | 226

SQ FT | M

w: RiverDistrict14.com

e: Sales@RiverDistrict14.com

t: 305-482-1542

The dimensions stated for this unit floor plan are approximate, because there are various recognized methods for calculating the square footage of a unit. The square footage stated here is calculated from the exterior boundaries of the exterior walls to the centerline of interior opening walls without deductions for columns, trusses, or architectural features. This method typically results in quoted dimensions greater than the dimensions that would be determined by using other accepted methods. The definition of "Net" and the calculation method to be relied upon is set forth in the Developer's Prospectus. The illustrations and images are conceptual and may vary from concept to actual construction. The floor plan, unit layout, locations of windows, doors, closets, plumbing fixtures, electrical equipment, appliances, structural elements, architectural design elements, and the walls, configurations, and entries to rooms may change with approved plans, permitting, and construction. The furniture plan and the uses of space illustrated are suggested uses only and not intended to guarantee any specific use of space. Furnishings, design features, fixtures, and other illustrations are conceptual and may vary upon completion. The Developer, River South Property Owner LLC, is a licensee of ALTA Development LLC who is not the Developer. © 2023 with all rights reserved River South Property Owner LLC.

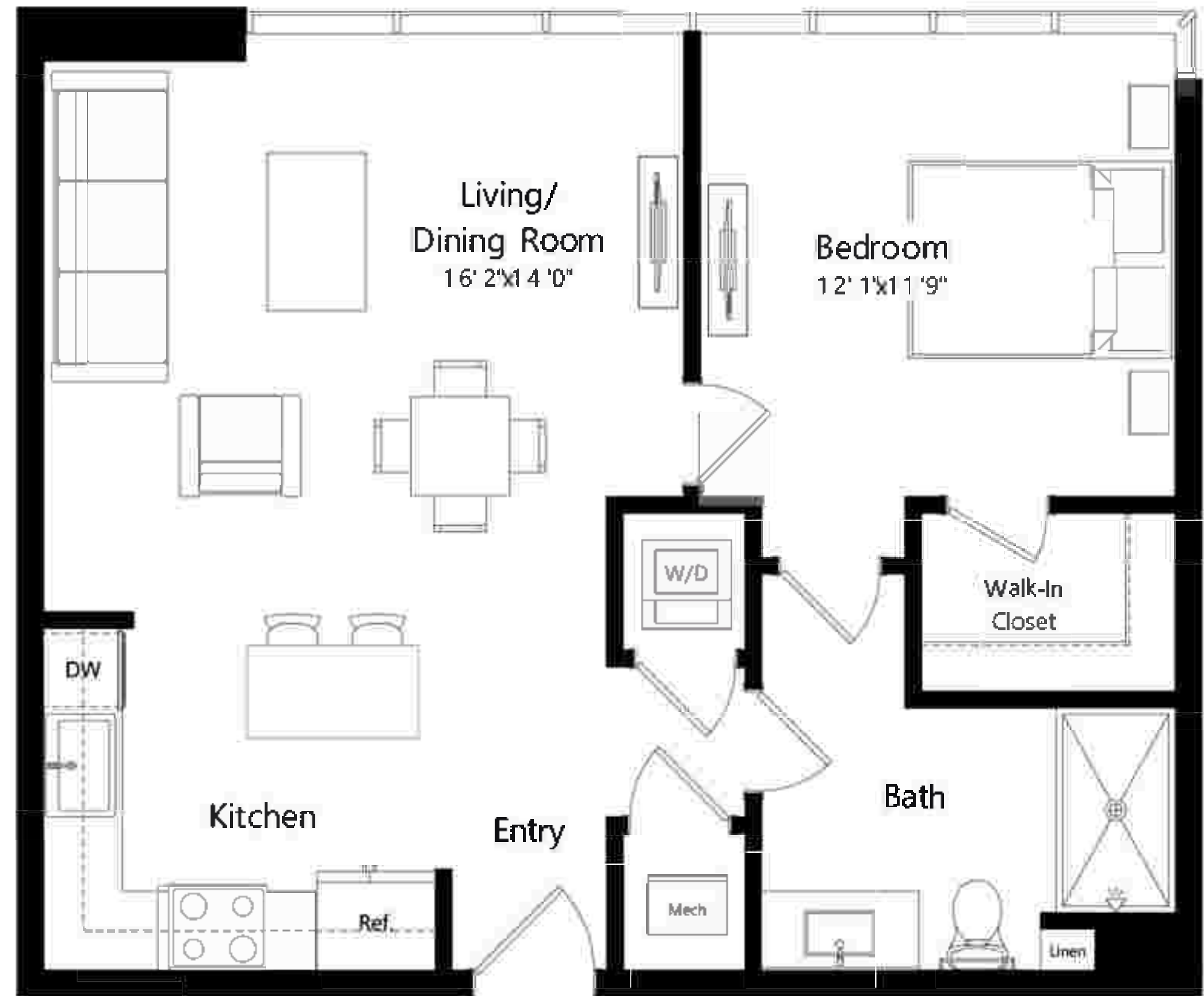


F3

1 BEDROOM 1 BATH

14

RIVER DISTRICT
MIAMI



700 | 213

SQ FT | M

w: RiverDistrict14.com

e: Sales@RiverDistrict14.com

t: 305-482-1542

The dimensions stated for this unit floor plan are approximate, because there are various recognized methods for measuring the square footage of a unit. The square footage stated here is calculated from the exterior boundaries of the exterior walls to the centerline of interior dividing walls without deductions for cabinets, trays, or architectural features. This method typically results in quoted dimensions greater than the dimensions that would be determined by using other accepted methods. The definition of "Net" and the calculation method to be relied upon is set forth in the Developer's Prospectus. The illustrations and ranges are conceptual and may vary from concept to actual construction. The floor plan, unit layout, locations of windows, doors, closets, plumbing fixtures, electrical equipment, appliances, structural elements, architectural design elements, and the walls, configurations, and entries to rooms may change with approved plans, permitting, and construction. The furniture plan and the uses of space illustrated are suggested uses only and not intended to guarantee the availability of space. Furnishings, design features, fixtures, and other illustrated are conceptual and may vary upon completion. The Developer, River South Property Owner LLC, is a licensee of APT Development LLC who is not the Developer. © 2023 with all rights reserved River South Property Owner LLC.



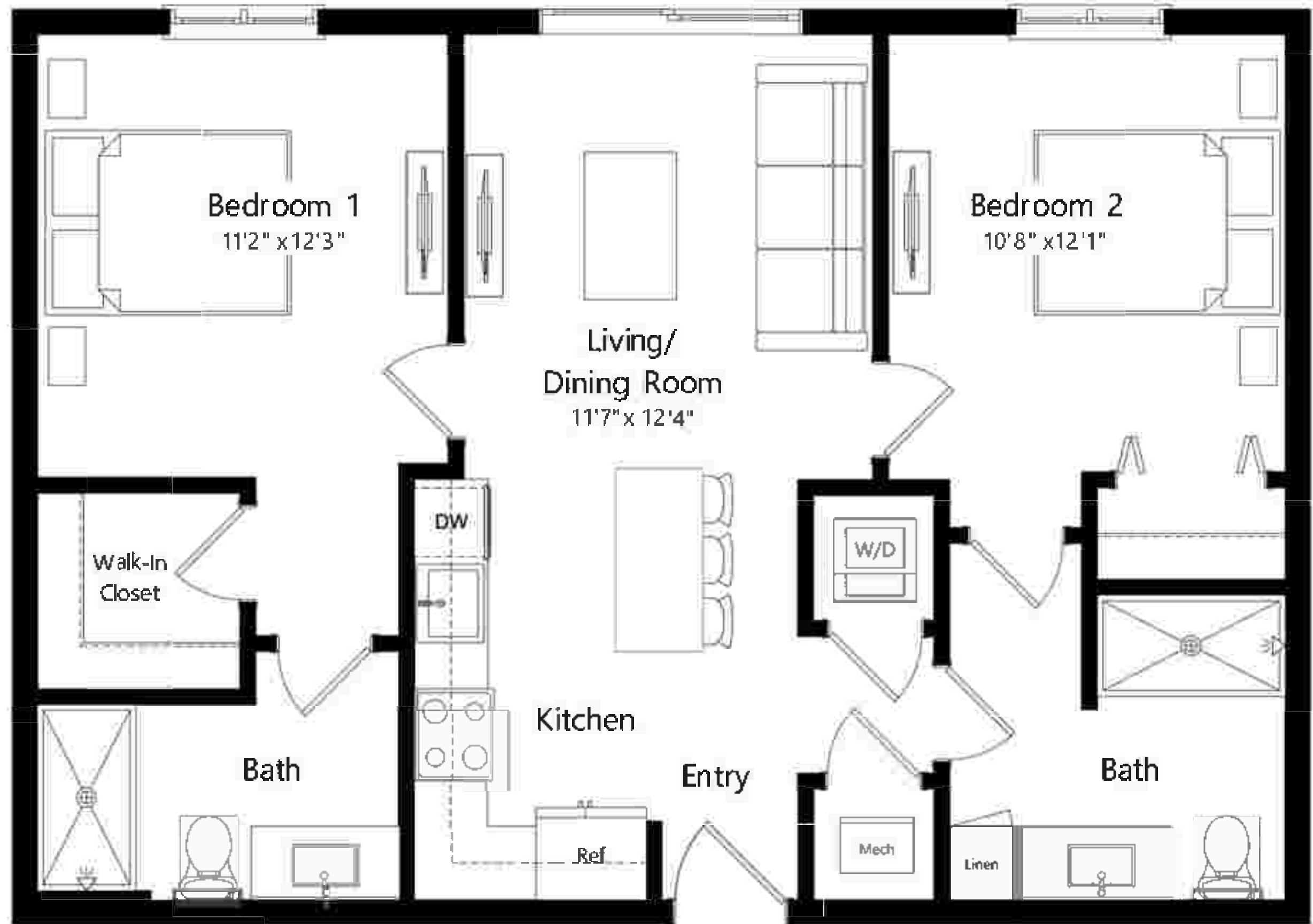
F5

2 BEDROOM 2 BATH

14

RIVER DISTRICT

MIAMI



880 | 268

SQ FT | M

w: RiverDistrict14.com

e: Sales@RiverDistrict14.com

t: 305-482-1542

The dimensions stated for this unit floor plan are approximate, because there are various recognized methods for measuring the square footage of a unit. The square footage stated here is calculated from the exterior boundaries of the exterior walls to the centerline of interior dividing walls without deductions for cabinets, trays, or architectural features. This method typically results in quoted dimensions greater than the dimensions that would be determined by using other accepted methods. The definition of "Net" and the calculation method to be relied upon is set forth in the Developer's Prospectus. The illustrations and images are conceptual and may vary from concept to actual construction. The floor plan, unit layout, locations of windows, doors, closets, plumbing fixtures, electrical equipment, appliances, structural elements, architectural design elements, and the walls, configurations, and entries to rooms may change with final approval plans, permitting, and construction. The furniture plan and the uses of space illustrated are suggested uses only and not intended to guarantee the specific uses of space. Furnishings, design features, fixtures, and other illustrated are conceptual and may vary upon completion. The Developer, River South Property Owner LLC, is a licensee of ALTA Development LLC who is not the Developer. © 2023 with all rights reserved River South Property Owner LLC.



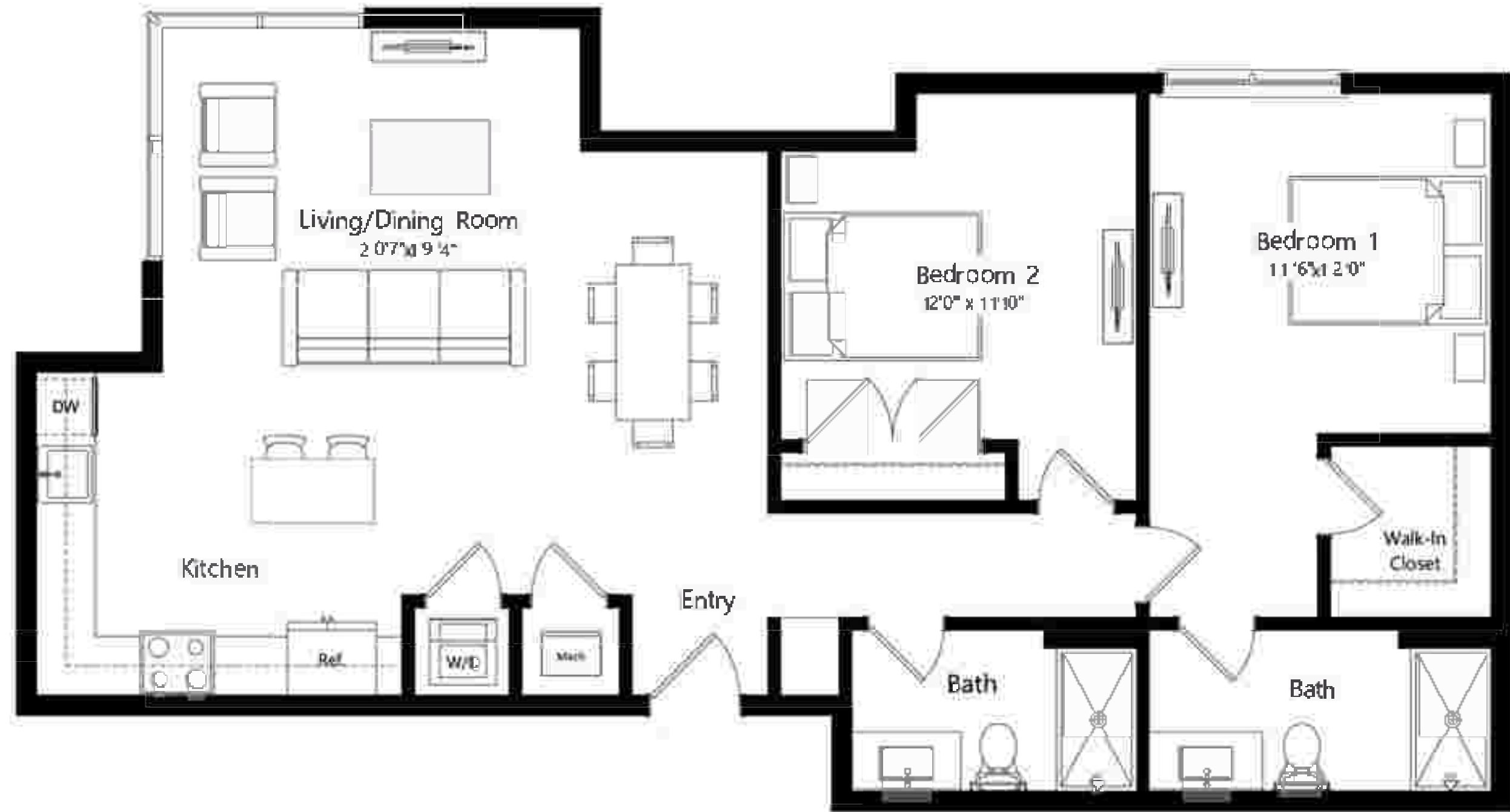
F6

2 BEDROOM 2 BATH

14

RIVER DISTRICT

MIAMI



1130 | 344

SQ FT | M

w: RiverDistrict14.com

e: Sales@RiverDistrict14.com

t: 305-482-1542

The dimensions stated for this unit floor plan are approximate because there are various recognized methods for measuring the square footage of a unit. The square footage stated here is calculated from the exterior boundaries of the exterior walls to the centerline of interior opening walls without deductions for cabinets, trays, or architectural features. This method typically results in quoted dimensions greater than the dimensions that would be determined by using other accepted methods. The definition of "Net" and the calculation method to be relied upon is set forth in the Developer's Prospectus. The illustrations and ranges are conceptual and may vary from concept to actual construction. The floor plan, unit layout, location of windows, doors, closets, plumbing fixtures, electrical equipment, appliances, structural elements, architectural design elements, and the walls, configurations, and entries to rooms may change with or without notice during the permitting and construction. The furniture plan and the uses of space illustrated are suggested uses only and not intended to guarantee the specific use of space. Furnishings, design features, fixtures, and other illustrated are conceptual and may vary upon completion. The Developer, River South Property Owner LLC, is a licensee of ALTA Development LLC who is not the Developer. © 2023 with all rights reserved River South Property Owner LLC.



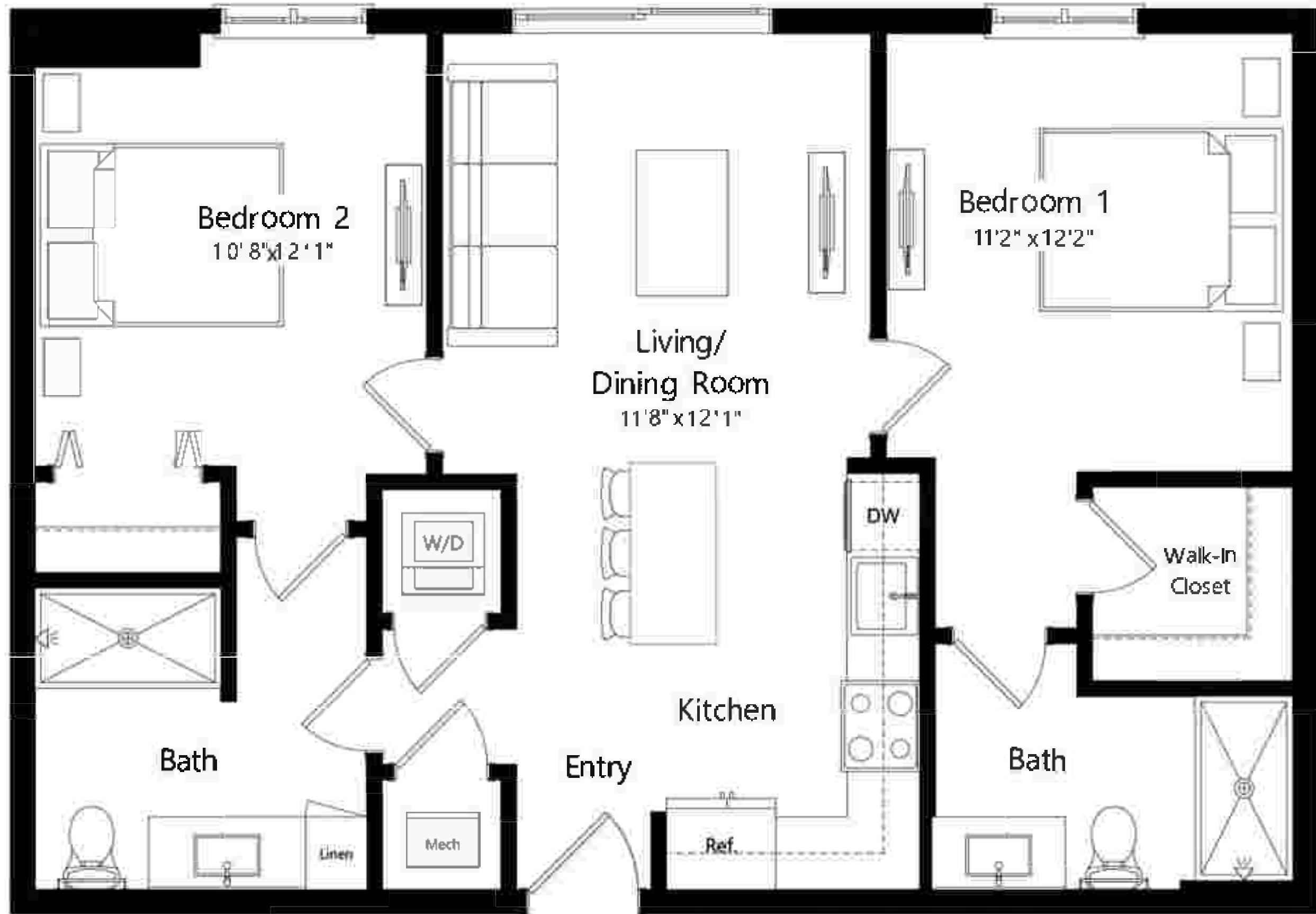
F7

2 BEDROOM 2 BATH

14

RIVER DISTRICT

MIAMI



875 | 267

SQ FT | M

w: RiverDistrict14.com

e: Sales@RiverDistrict14.com

t: 305-482-1542

The dimensions stated for this unit are approximate because there are various recognized methods for measuring the square footage of a unit. The square footage stated here is calculated from the exterior boundaries of the exterior walls to the centerline of interior demising walls without deductions for cabinets, trays, or architectural features. This method typically results in quoted dimensions greater than the dimensions that would be determined by using other accepted methods. The definition of "Net" and the calculation method to be used upon is set forth in the Developer's Prospectus. The illustrations and ranges are conceptual and may vary from concept to actual construction. The floor plan, unit layout, locations of windows, doors, closets, plumbing fixtures, electrical equipment, appliances, structural elements, architectural design elements, and the walls, configurations, and entries to rooms may change with final approval plans, permitting, and construction. The furniture plan and the uses of space illustrated are suggested uses only and not intended to guarantee the specific uses of space. Furnishings, design features, fixtures, and other illustrated are conceptual and may vary upon completion. The Developer, River Bath Property Owner LLC, is a licensee of ALTA Development LLC who is not the Developer. © 2023 with all rights reserved River Bath Property Owner LLC.

